

Compact Design for Academic and Routine Applications

The LMS-Z100 series features a 4.4:1 zoom range in a compact zoom body ideal for routine applications and academia. The Greenough optical design provides parfocal, flat and high resolution zoom optics at an entry level price point

Multiple Base Options



LS-100
Compact Plain Stand



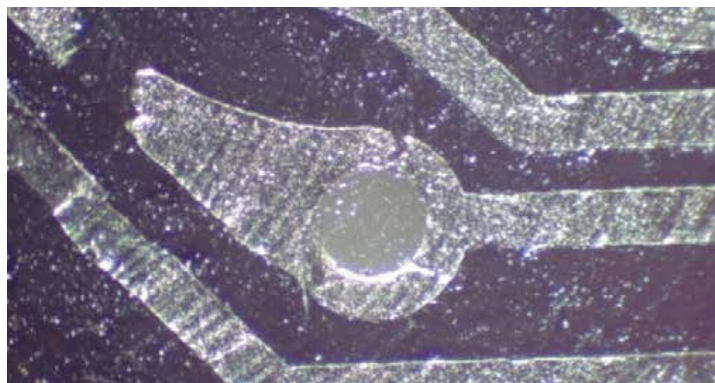
LS-200
Halogen Transmitted/Reflected
Illumination Pole Stand



LS-200LED
LED Transmitted/Reflected
Illumination Pole Stand



LS-300
Compact LED Transmitted/
Reflected Illumination Stand



Optics

Binocular and Trinocular viewing heads available.

Features

- 4:1 Zoom Ratio
- High eyepoint widefield eyepieces
- Diopter adjustable eyetubes (± 5)
- Interpupillary adjustment (54mm - 75mm)
- 45° eyetubes for comfortable viewing
- Greenough optical design



LMSP-Z120H

LMSP-Z130H

Optical Specifications

Eyepiece	Standard Objective WD 95mm		0.5X Auxiliary Objec- tive WD 187mm	
	Mag	FOV (mm)	Mag	FOV (mm)
10X/20mm	8.0X	25	4X	50
	35.0X	5.7	17.5X	11.4
15X/15mm	12X	18.8	6X	37.6
	52.5X	4.2	26.25X	8.4
20X/10mm	16.0X	12.8	8X	25.6
	70.0X	2.9	35X	5.8

Specifications

Viewing Head	45° inclined binocular head with diopter adjustable eyepiece tubes, interpupillary range: 54mm - 75mm
	45° inclined trinocular head with diopter adjustable eyepiece tubes, interpupillary range: 54mm - 75mm, light split 50:50
Eyepiece	High eye-point wide field plan eyepiece PL10X/20mm
	High eye-point wide field plan eyepiece PL15X/15mm
	High eye-point wide field plan eyepiece PL20X/10mm
Main Objective	Zoom objective 0.80X - 3.5X, working distance: 100mm
Magnification	8.0X - 35X (w/ 10x eyepieces)
Auxiliary Objective	0.5X/187mm
Stand	Multiple stand options available
Camera adapter	0.3X/0.5X C-mount adapter
Accessories	Precision measuring stage, gem clip

LMS-Z100 SERIES

Standard Configurations



SPECIFICATION

MODEL

Part	Description	LMS-Z120-LS100	LMS-Z130-LS100	LMS-Z120-LS200	LMS-Z130-LS200	LMS-Z120-LS200LED	LMS-Z130-LS200LED	LMS-Z120-LS300	LMS-Z130-LS300
EYEPIECE	High eye-point wide field plan eyepiece PL10X/20mm	•	•	•	•	•	•	•	•
OBJECTIVE	Zoom objective 0.80X - 3.5X, working distance: 95mm	•	•	•	•	•	•	•	•
HEAD TYPE	45° inclined binocular head with diopter adjustable eyepiece tubes, interpupillary range: 54mm - 75mm	•		•		•		•	
	45° inclined trinocular head with diopter adjustable eyepiece tubes, interpupillary range: 54mm - 75mm, light split 50:50		•		•		•		•
STAND	LS-100 compact plain base	•	•						
	LS-200 compact halogen base, transmitted and reflected illumination			•	•				
	LS-200LED compact LED base, transmitted and reflected illumination					•	•		
	LS-300 compact, low-profile LED Base, transmitted and reflected illumination							•	•

ACCESSORIES

EYEPIECES

Part #	Description
L MSP-WH10X20	WF HP PL 10x Eyepiece, 20mm FOV
L MSP-WH15X15	WF HP PL 15x Eyepiece, 15mm FOV
L MSP-WH20X10	WF HP PL 20x Eyepiece, 10mm FOV 16mm FOV

SUPPLEMENTAL LENSES

Part #	Description
L MSP-Z100-SL05	0.5X auxiliary objective lens, working distance 187mm.

LED Dual Gooseneck Illuminator

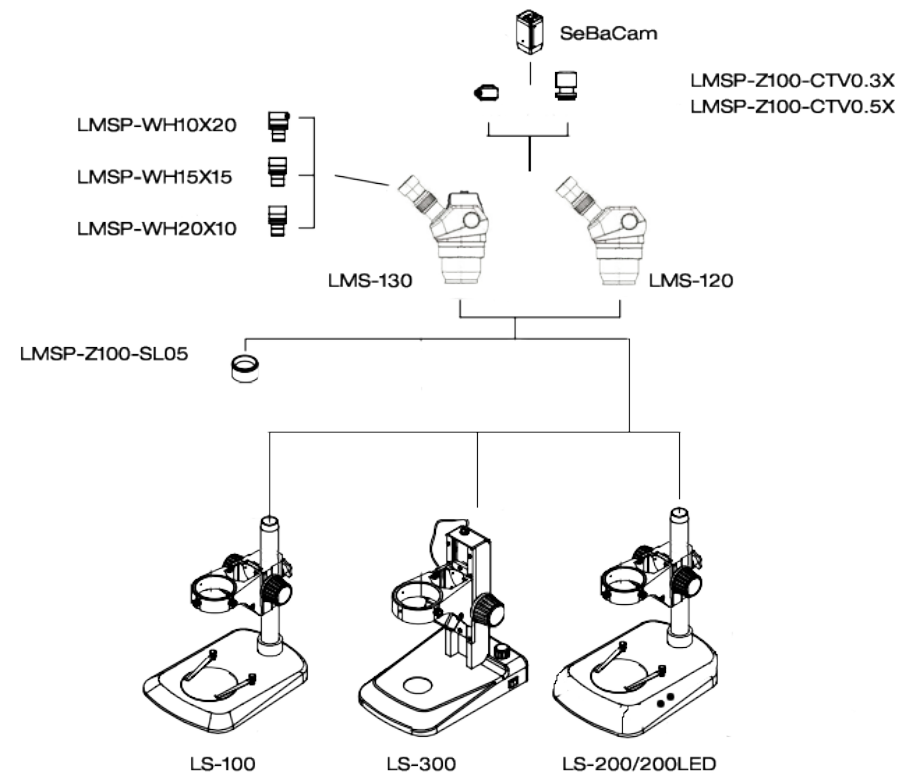
Part #	Description
AMPS-ILED-30W	LED Dual Gooseneck Illuminator with weighted base, white LED
L MSP-365	LED Module, 3W, 365nm, UV
L MSP-460	LED Module, 3W, 460nm, Blue
L MSP-520	LED Module, 1W, 520nm, Green
L MSP-630	LED Module, 3W, 630nm, Red
L MSP-730	LED Module, 1W, 730nm, IR

C-MOUNT CAMERA ADAPTERS

Part #	Description
L MSP-Z100-CTV0.3X	0.3X camera tube, C-mount interface, adjustable focus
L MSP-Z100-CTV0.5X	0.5X camera tube, C-mount interface, adjustable

CAMERAS

Part #	Description
SeBaCam5C	5MP Digital Color Camera, CMOS, w/ SeBaView Imaging Software
SeBaCam10C	10MP Digital Color Camera, CMOS, w/ SeBaView Imaging Software
SeBaCam14C	14MP Digital Color Camera, CMOS, w/ SeBaView Imaging Software
SeBaCamCool1.4C SeBaCamCool1.4M	1.4MP Digital Camera, CCD, w/ SeBaView Imaging Software. Available in Color and Monochrome



DIMENSIONS

