



LMS-S2 Series

Stereo Microscope System
Fixed Magnification

Dual Fixed Magnification System for Routine Applications

The LMS-S2 series features dual fixed magnification objectives and high quality optics. Two magnification combinations are available: 1x/3x and 2x/4x.

Multiple Base Options



LS-100
Compact Plain Stand



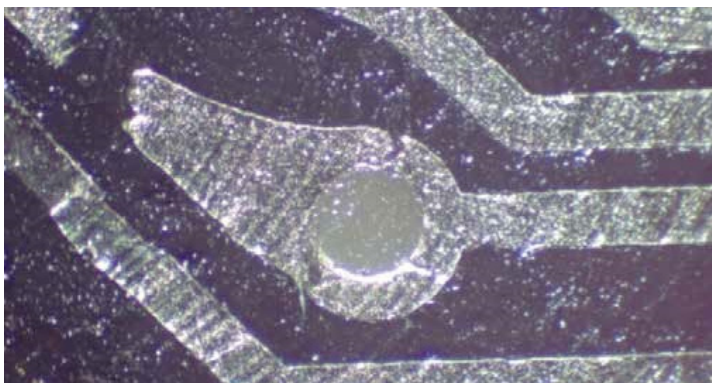
LS-200
Halogen Transmitted/Reflected
Illumination Pole Stand



LS-200LED
LED Transmitted/Reflected
Illumination Pole Stand



LS-300
Compact LED Transmitted/
Reflected Illumination Stand



Optics

Features

- Fixed magnification (1x/3x and 2x/4x)
- High eyepoint widefield eyepieces
- Diopter adjustable eyetubes (± 5)
- Interpupillary adjustment (54mm - 76mm)
- 45° eyetubes for comfortable viewing

Optical Specifications

Eyepiece	1x/3x Objective		2x/4x Objective	
	Mag	FOV (mm)	Mag	FOV (mm)
10X/23mm	10X	23	20X	11.5
	30X	7.7	40X	5.8
15X/16mm	15X	16	30X	8
	45X	5.3	60X	4
20X/12mm	20X	12	40X	6
	60X	4	80X	3

Specifications

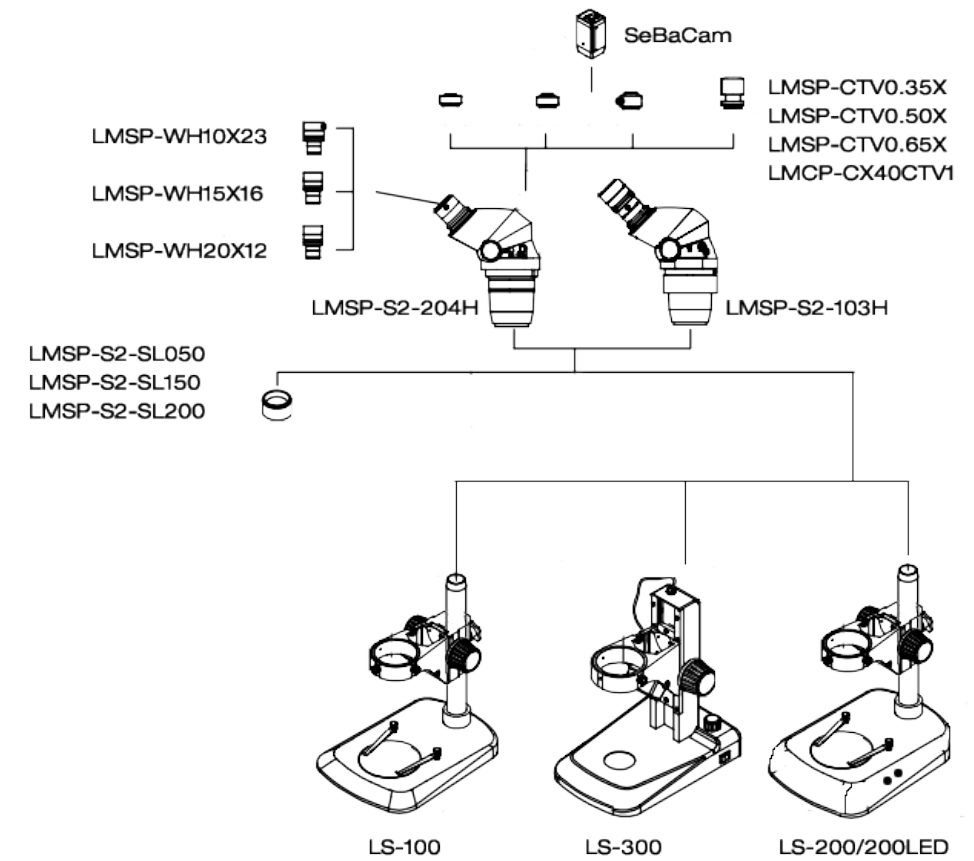
Viewing Head	45° inclined binocular head with diopter adjustable eyepiece tubes, interpupillary range: 54mm - 76mm
Eyepiece	High eye-point wide field plan eyepiece PL10X/23mm
	High eye-point wide field plan eyepiece PL15X/16mm
	High eye-point wide field plan eyepiece PL20X/12mm
Main Objective	Fixed objectives: (1x/3x or 2x/4x)
Magnification	10x/30x or 20x/40x (w/ 10x eyepieces)
Auxiliary Objective	0.5X/165mm, 1.5X/45mm, 2X/30mm
Stand	Multiple stand options available
Accessories	Precision measuring stage, gem clip

ACCESSORIES

EYEPIECES	
Part #	Description
LMSP-WH10X23	WF HP PL 10x Eyepiece, 23mm FOV
LMSP-WH15X16	WF HP PL 15x Eyepiece, 16mm FOV
LMSP-WH20X12	WF HP PL 20x Eyepiece, 12mm FOV

SUPPLEMENTAL LENSES	
Part #	Description
LMSP-S2-SL050	0.5X auxiliary objective lens, working distance 165mm.
LMSP-S2-SL150	1.5X auxiliary objective lens, working distance 45mm.
LMSP-S2-SL200	2.0X auxiliary objective lens, working distance 30mm.

LED Dual Gooseneck Illuminator	
Part #	Description
AMPS-ILED-30W	LED Dual Gooseneck Illuminator with weighted base, white LED
LMSP-365	LED Module, 3W, 365nm, UV
LMSP-460	LED Module, 3W, 460nm, Blue
LMSP-520	LED Module, 1W, 520nm, Green
LMSP-630	LED Module, 3W, 630nm, Red
LMSP-730	LED Module, 1W, 730nm, IR



LMS-S2 SERIES

Standard Configurations



SPECIFICATION

MODEL

Part	Description	LMS-S2103-LS100	LMS-S2204-LS100	LMS-S2103-LS200	LMS-S2204-LS200	LMS-S2103-LS200LED	LMS-S2204-LS200LED	LMS-S2103-LS300	LMS-S2204-LS300
EYEPIECE	High eye-point wide field plan eyepiece PL10X/23mm	•	•	•	•	•	•	•	•
OBJECTIVE	1X/3X dual fixed objectives	•		•		•		•	
	2X/4X dual fixed objectives		•		•		•		•
HEAD TYPE	45° inclined binocular head with diopter adjustable eyepiece tubes, interpupillary range: 54mm - 76mm	•	•	•	•	•	•	•	•
STAND	LS-100 compact plain base	•	•						
	LS-200 compact halogen base, transmitted and reflected illumination			•	•				
	LS-200LED compact LED base, transmitted and reflected illumination					•	•		
	LS-300 compact, low-profile LED Base, transmitted and reflected illumination							•	•

A Microscope for Everyone



© 2017 Thermo Fisher Scientific Inc. All rights reserved.
Trademarks used are owned as indicated at fishersci.com/trademarks.

In the United States:

For customer service, call 1-800-766-7000
To fax an order, use 1-800-926-1166
To order online: fishersci.com

In Canada:

For customer service, call 1-800-234-7437
To fax an order, use 1-800-463-2996
To order online: fishersci.ca

