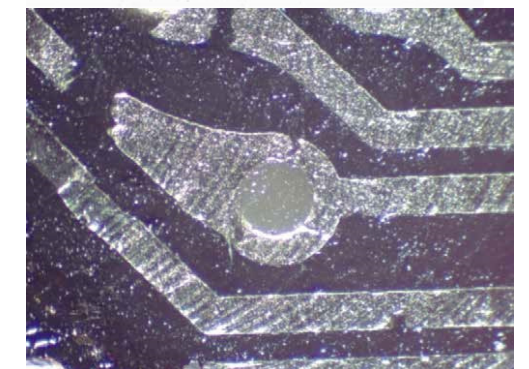
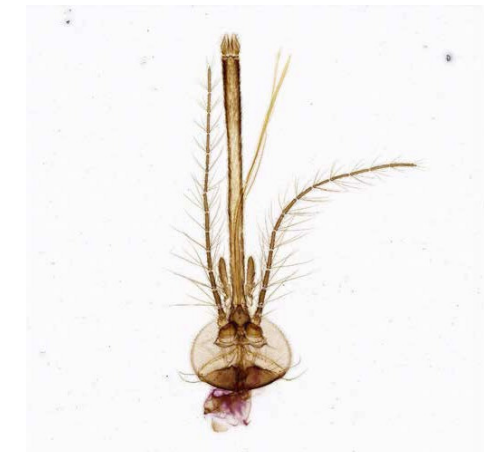


Exceptional image quality & comfortable operation

Precise · Practical · Compact ·

The LMS-Z200Pro series features the Greenough optical system which provides high resolution optics at an economical price. The newly designed optical path with integrated click stop function, allows for reproducible precision for life science research, education and industrial applications.



Ergonomic Design

The ergonomic design of the LMS-Z200Pro series relieves the fatigue of long time use.



Click stop function

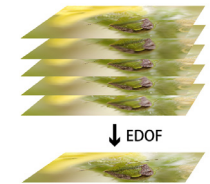
Zoom knob features click stop option that allows user to easily reproduce magnification setting with precision

Depth of field and flatness

Greenough optical system with convergence angle of 10 degrees paired with wide field plan eyepieces provide excellent image flatness and depth of field.

Documentation and Analysis

Choose a SeBaCam Digital Camera to add imaging capabilities to your system. Easily document, compare, and analyze samples. The user-friendly SeBaView software includes many advanced features including extended depth of focus.



MZS32 LED BF Stand and
MZS33 LED BF and FL Stand

Expand magnification with auxiliary objectives

Three auxiliary objectives 0.5X/0.7X/1.5X available to expand magnification from 3.3X to 135X. Working distances range from 177mm to 47mm, to meet the requirements of many applications.



AMPS-ILED-30W
LED illuminator
BF and FL

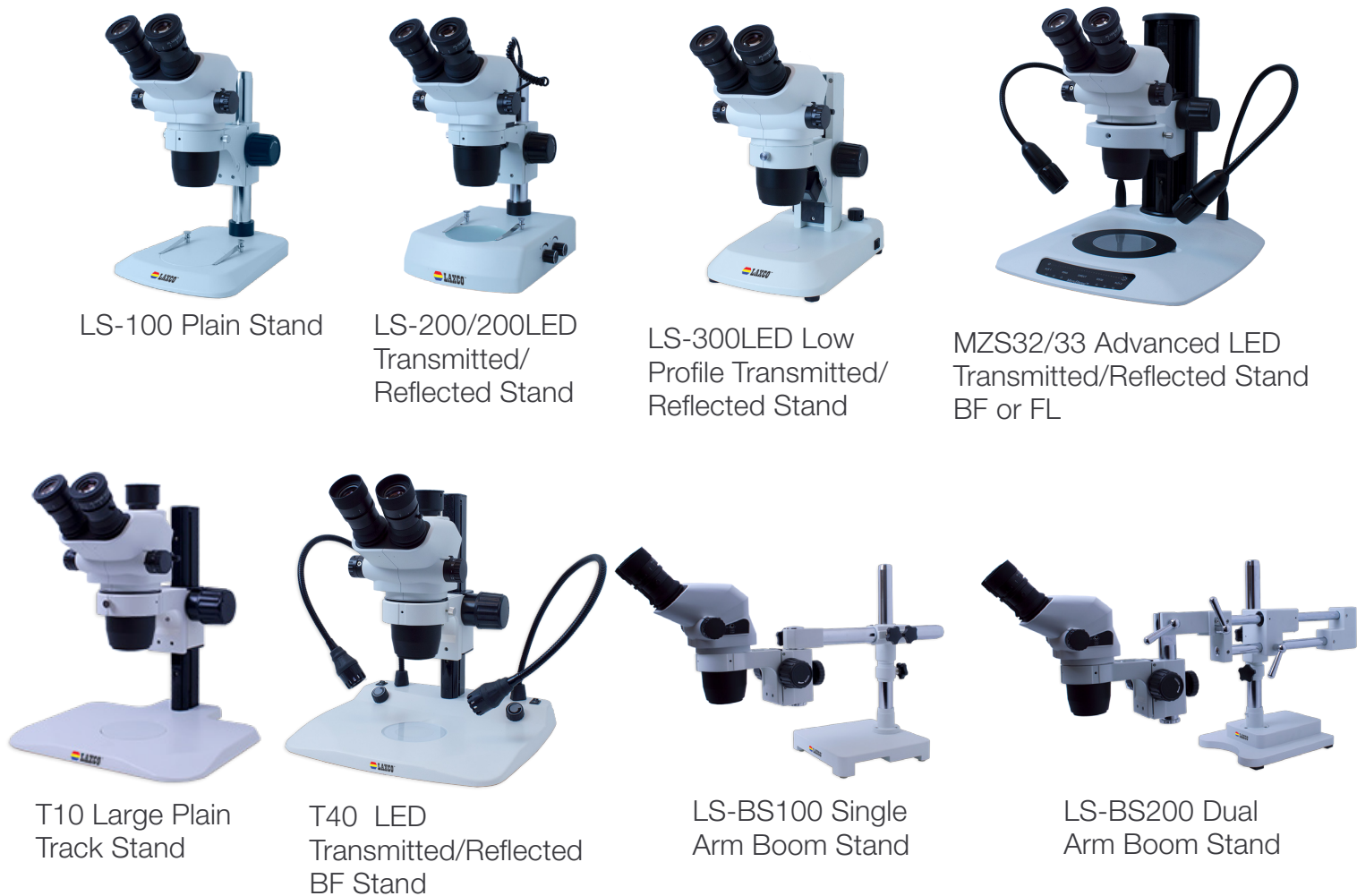
Unique illumination options available

Choose from a range of illumination stands with integrated illumination or add external illuminators to plain stands and boom stand configurations. Transmitted, Reflected, and LED fluorescence options are available.



Stand Options

Optical Specifications



Eyepiece	Standard Objective WD 110mm		0.5X Auxiliary Objec- tive WD 177mm		1.5X Auxiliary Objec- tive WD 47mm		2X Auxiliary Objective WD 26mm	
	Mag	FOV (mm)	Mag	FOV (mm)	Mag	FOV (mm)	Mag	FOV (mm)
10X/22mm	6.7X	32.8	3.35X	65.6	10.05X	21.9	13.4X	16.4
	45.0X	4.9	22.5X	9.8	67.5X	3.3	90X	2.45
15X/16mm	10.05X	23.9	5.03X	47.8	15.08	15.9	20.1X	11.95
	67.5X	3.6	33.75X	7.2	101.25X	2.4	135X	1.8
20X/12mm	13.4X	17.9	6.7X	32.8	21.1X	11.93	26.8X	8.95
	90.0X	2.7	45.0X	4.9	135.0X	1.8	180X	1.35

Specifications

Viewing Head	45° inclined binocular head with fixed eyepiece tube, interpupillary range: 52mm - 76mm, with click stop and interlock mechanism
	45° inclined trinocular head with fixed eyepiece tube, interpupillary range: 52mm - 76mm, light split: 100:0 or 0:100 (left eyepiece), w/ click stop and interlock mechanism
Eyepiece	High eye-point wide field plan eyepiece PL10X/22mm, with adjustable diopter
	High eye-point wide field plan eyepiece PL15X/16mm, with adjustable diopter
	High eye-point wide field plan eyepiece PL20X/12mm, with adjustable diopter
Main Objective	Zoom objective 0.67X - 4.5X, working distance: 110mm
Magnification	06.7X - 45X (w/ 10x eyepieces)
Auxiliary Objective	0.5X/177mm, 0.7X/120mm, 1.5X/47mm, 2X
Stand	Multiple stand options available
Camera adapter	0.35X/0.5X/0.65X/1X C-mount adapter
Accessories	Precision measuring stage, gem clip

Standard Configurations

LMS-Z200PRO SERIES



SPECIFICATION		MODEL									
Part	Description	LMS-Z220P-LS100	LMS-Z230P-LS100	LMS-Z220P-LS200	LMS-Z230P-LS200	LMS-Z220P-LS200LED	LMS-Z230P-LS200LED	LMS-Z220P-LS300	LMS-Z230P-LS300	LMS-Z220P-B100	LMS-Z230P-B100
EYEPIECE	High eye-point wide field plan eyepiece PL10X/22mm, with adjustable diopter	•	•	•	•	•	•	•	•	•	•
OBJECTIVE	Zoom objective 0.67X - 4.5X, working distance: 110mm	•	•	•	•	•	•	•	•	•	•
HEAD TYPE	45° inclined binocular head, interpupillary range: 52mm - 76mm, with click stop and interlock mechanism	•		•		•		•		•	
	45° inclined trinocular head, interpupillary range: 52mm - 76mm, with click stop and interlock mechanism		•		•		•		•		•
STAND	LS-100 compact plain base	•	•								
	LS-200 compact halogen base, transmitted and reflected illumination			•	•						
	LS-200LED compact LED base, transmitted and reflected illumination					•	•				
	LS-300 compact, low-profile LED Base, transmitted and reflected illumination							•	•		
	B100 single arm boom stand, LED dual gooseneck illuminator									•	
	B200 dual arm ball bearing boom stand, LED dual gooseneck illuminator										
	T10 large plain base										
	T40 large LED base, transmitted and dual gooseneck light guides										
	MZS32 advanced LED base, transmitted BF and edge, dual gooseneck light guides (interchangeable LED modules available)										
	MZS33 advanced LED base for fluorescence, transmitted BF and edge, dual gooseneck light guides (interchangeable LED modules available), reflected fluorescence illumination										

Standard Configurations

LMS-Z200PRO SERIES



SPECIFICATION

MODEL

Part	Description	LMS-Z220P-B200	LMS-Z230P-B200	LMS-Z220P-T10	LMS-Z230P-T10	LMS-Z220P-T40	LMS-Z230P-T40	LMS-Z220P-MZS32	LMS-Z230P-MZS32	LMS-Z220P-MZS33	LMS-Z230P-MZS33
EYEPIECE	High eye-point wide field plan eyepiece PL10X/22mm, with adjustable diopter	•	•	•	•	•	•	•	•	•	•
OBJECTIVE	Zoom objective 0.67X - 4.5X, working distance: 110mm	•	•	•	•	•	•	•	•	•	•
HEAD TYPE	45° inclined binocular head, interpupillary range: 52mm - 76mm, with click stop and interlock mechanism	•		•		•		•		•	
	45° inclined trinocular head, interpupillary range: 52mm - 76mm, with click stop and interlock mechanism		•		•		•		•		•
STAND	LS-100 compact plain base										
	LS-200 compact halogen base, transmitted and reflected illumination										
	LS-200LED compact LED base, transmitted and reflected illumination										
	LS-300 compact, low-profile LED Base, transmitted and reflected illumination										
	B100 single arm boom stand, LED dual gooseneck illuminator										
	B200 dual arm ball bearing boom stand, LED dual gooseneck illuminator	•	•								
	T10 large plain base			•	•						
	T40 large LED base, transmitted and dual gooseneck light guides					•	•				
	MZS32 advanced LED base, transmitted BF and edge, dual gooseneck light guides (interchangeable LED modules available), touchpanel							•	•		
	MZS33 advanced LED base for fluorescence, transmitted BF and edge, dual gooseneck light guides (interchangeable LED modules available), reflected fluorescence illumination, touchpanel									•	•

ACCESSORIES

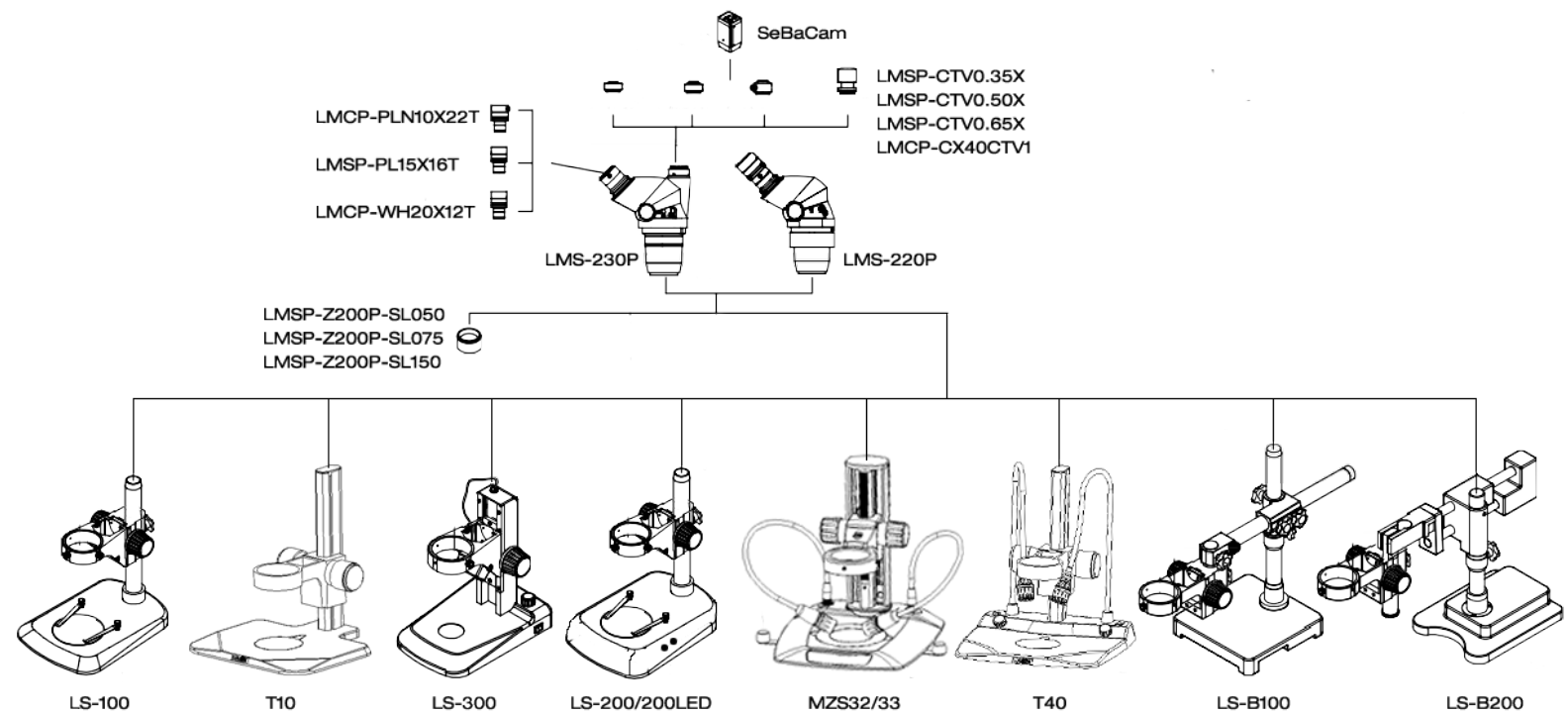
EYEPIECES	
Part #	Description
LMCP-PLN10X22T	WF HP PL 10x Eyepiece, Diopter Adjustment, 22mm FOV
LMS-PL15X16T	WF HP PL 15x Eyepiece, Diopter Adjustment, 16mm FOV
LMCP-WH20X12T	WF HP PL 20x Eyepiece, Diopter Adjustment, 12mm FOV

SUPPLEMENTAL LENSES	
Part #	Description
LMS-2200P-SL050	0.5X auxiliary objective lens, working distance 177mm.
LMS-2200P-SL075	0.75X auxiliary objective lens. Working distance 120mm.
LMS-2200P-SL150	1.5X auxiliary objective lens. Working distance 47mm.
LMS-2200P-SL200	2.0X auxiliary objective lens.

LED Dual Gooseneck Illuminator	
Part #	Description
AMPS-ILED-30W	LED Dual Gooseneck Illuminator with weighted base, white LED
LMS-365	LED Module, 3W, 365nm, UV
LMS-460	LED Module, 3W, 460nm, Blue
LMS-520	LED Module, 1W, 520nm, Green
LMS-630	LED Module, 3W, 630nm, Red
LMS-730	LED Module, 1W, 730nm, IR

C-MOUNT CAMERA ADAPTERS	
Part #	Description
LMS-CTV0.35X	0.35X camera tube, C-mount interface, adjustable focus
LMS-CTV0.50X	0.5X camera tube, C-mount interface, adjustable
LMS-CTV0.65X	0.65X camera tube, C-mount interface, adjustable focus
LMCP-CX40CTV1	1X camera tube, C-mount interface, adjustable

CAMERAS	
Part #	Description
SeBaCam5C	5MP Digital Color Camera, CMOS, w/ SeBaView Imaging Software
SeBaCam10C	10MP Digital Color Camera, CMOS, w/ SeBaView Imaging Software
SeBaCam14C	14MP Digital Color Camera, CMOS, w/ SeBaView Imaging Software
SeBaCamCool1.4C	1.4MP Digital Camera, CCD, w/ SeBaView Imaging Software. Available in Color and Monochrome
SeBaCamCool1.4M	



DIMENSIONS

